

CCTV PRODUCTS SELECTION GUIDE

Q3, 2021



Recorder



Camera



APP



Software

Lite Series IP Camera (2MP/5MP)

ES-852021/22B-S5

- 1/2.9" CMOS
- 2MP (1920*1080)@25fps
- H.264/H.265
- Face detection
- IR Range 30m
- Fixed Lens 2.8mm/3.6mm
- DWDR, 3D DNR, BLC, ROI
- PoE, metal+plastic, IP67



BS-852022/23B-S5

- 1/2.9" CMOS
- 2MP (1920*1080)@25fps
- H.264/H.265
- Face detection
- IR Range 30m
- Fixed Lens 3.6mm/6mm
- DWDR, 3D DNR, BLC, ROI
- PoE, metal case, IP67



ES-852021/22C-S5/-MI

- 1/2.9" CMOS
- 2MP (1920*1080)@25fps
- H.264/H.265
- Face detection
- Built-In Microphone
- IR Range 30m
- Fixed Lens 2.8mm/3.6mm
- DWDR, 3D DNR, BLC, ROI
- PoE, metal case, IP67



BS-852022/23C-S5/-MI

- 1/2.9" CMOS
- 2MP (1920*1080)@25fps
- H.264/H.265
- Face detection
- Built-In Microphone
- IR Range 30m
- Fixed Lens 3.6mm/6mm
- DWDR, 3D DNR, BLC, ROI
- PoE, metal case, IP67



BL-852038S-S5

- 1/2.9" CMOS
- 2MP (1920*1080)@25fps
- H.264/H.265
- Face detection
- IR Range 50m
- 3X zoom motorized lens
- DWDR, 3D DNR, BLC, ROI
- 1CH audio input
- PoE, metal case, IP67



EL-852038I-S5

- 1/2.9" CMOS
- 2MP (1920*1080)@25fps
- H.264/H.265
- Face detection
- IR Range 50m
- 3X zoom motorized lens
- DWDR, 3D DNR, BLC, ROI
- 1CH audio input
- PoE, metal case, IP67



DL-852028B-S5

- 1/2.9" CMOS
- 2MP (1920*1080)@25fps
- H.264/H.265
- Face detection
- IR Range 30m
- 3X zoom motorized lens
- DWDR, 3D DNR, BLC, ROI
- 1CH audio input
- PoE, metal case, IP67, IK10



BS-855L22C-E3/23C-E3

- 1/2.8" Sony STARVIS CMOS
- 5MP (2560*1920)@20fps
- H.264/H.265/H.265+
- Face detection
- IR Range 30m
- Fixed Lens 3.6/6mm
- PoE, metal case, IP67



ES-855L21C-E3/22C-E3

- 1/2.8" Sony STARVIS CMOS
- 5MP (2560*1920)@20fps
- H.264/H.265/H.265+
- Face detection
- IR Range 30m
- Fixed Lens 2.8/3.6mm
- PoE, metal+plastic, IP67



BL-855L38S-E3

- 1/2.8" Sony STARVIS CMOS
- 5MP (2560*1920)@20fps
- H.264/H.265/H.265+
- Face detection
- IR Range 50m
- Motorized 3.6-10.8mm
- 1CH audio input
- PoE, metal case, IP67



EL-855L38I-E3

- 1/2.8" Sony STARVIS CMOS
- 5MP (2560*1920)@20fps
- H.264/H.265/H.265+
- Face detection
- IR Range 50m
- Motorized 3.6-10.8mm
- 1CH audio input
- PoE, metal case, IP67



DL-855L28B-E3

- 1/2.8" Sony STARVIS CMOS
- 5MP (2560*1920)@20fps
- H.264/H.265/H.265+
- Face detection
- IR Range 30m
- Motorized 3.6-10.8mm
- 1CH audio input
- PoE, metal case, IP67, IK10



Pro series IP Camera (2MP/4MP/5MP/8MP)

BS-852T22/23C-S6/-MI

- 1/2.8" Sony STARVIS CMOS
- 2MP (1920*1080)@25fps
- H.264/H.265/H.265+
- Face detection
- Built-In Microphone
- IR Range 30m
- Fixed Lens 3.6/6mm
- 120dB TWDR, 3D DNR, BLC, ROI
- PoE, metal case, IP67



ES-852T21/22C-S6/-MI

- 1/2.8" Sony STARVIS CMOS
- 2MP (1920*1080)@25fps
- H.264/H.265/H.265+
- Face detection
- Built-In Microphone
- IR Range 30m
- Fixed Lens 2.8/3.6mm
- 120dB TWDR, 3D DNR, BLC, ROI
- PoE, metal case, IP67



BL-852T48S-S6

- 1/2.8" Sony STARVIS CMOS
- 2MP (1920*1080)@25fps
- H.264/H.265/H.265+
- Face detection
- IR Range 80m
- 3X zoom motorized lens
- 120dB TWDR, 3D DNR, BLC, ROI
- 1CH Audio Input
- PoE, metal case, IP67



EL-852T38I-S6

- 1/2.8" Sony STARVIS CMOS
- 2MP (1920*1080)@25fps
- H.264/H.265
- Face detection
- IR Range 50m
- 3X zoom motorized lens
- 120dB TWDR, 3D DNR, BLC, ROI
- 1CH audio input
- PoE, metal case, IP67



DL-852T28B-S6

- 1/2.8" Sony STARVIS CMOS
- 2MP (1920*1080)@25fps
- H.264/H.265/H.265+
- Face detection
- IR Range 30m
- 3X zoom motorized lens
- 120dB TWDR, 3D DNR, BLC, ROI
- 1CH Audio Input
- Audio/Alarm/RS485/SD card slot
- PoE, metal case, IP67, IK10



BL-852T48A-S6

- 1/2.8" Sony STARVIS CMOS
- 2MP (1920*1080)@25fps
- H.264/H.265/H.265+
- Face detection
- IR Range 80m
- 3X zoom motorized lens
- 120dB TWDR, 3D DNR, BLC, ROI
- Audio/Alarm/RS485/SD card slot
- PoE, metal case, IP67



BS-854N22C-E3/23C-E3

- 1/2.8" Sony STARVIS CMOS
- 4MP (2592*1520)@25fps
- H.264/H.265/H.265+
- Face detection
- IR Range 30m
- Fixed Lens 3.6mm/6mm
- TWDR, 3D DNR, BLC, ROI
- PoE, metal case, IP67



ES-854N21C-E3/22C-E3

- 1/2.8" Sony STARVIS CMOS
- 4MP (2592*1520)@25fps
- H.264/H.265/H.265+
- Face detection
- IR Range 30m
- Fixed Lens 2.8mm/3.6mm
- TWDR, 3D DNR, BLC, ROI
- PoE, metal case, IP67



BL-854N38A-E3

- 1/2.8" Sony STARVIS CMOS
- 4MP (2592*1520)@25fps
- H.264/H.265/H.265+
- Face detection
- IR Range 50m
- Motorized 3.6-10.8mm
- TWDR, 3D DNR, BLC, ROI
- Audio/Alarm/RS485/SD card slot
- PoE, metal case, IP67



EL-854N38I-E3

- 1/2.8" Sony STARVIS CMOS
- 4MP (2592*1520)@25fps
- H.264/H.265/H.265+
- Face detection
- IR Range 50m
- Motorized 3.6-10.8mm
- TWDR, 3D DNR, BLC, ROI
- 1CH audio input
- PoE, metal case, IP67



DL-854N28B-E3

- 1/2.8" Sony STARVIS CMOS
- 4MP (2592*1520)@25fps
- H.264/H.265/H.265+
- Face detection
- IR Range 30m
- Motorized 3.6-10.8mm
- TWDR, 3D DNR, BLC, ROI
- Audio/Alarm/RS485/SD card slot
- PoE, metal case, IP67



BS-855P22/23C-S7/-MI

- 1/2.8" CMOS
- 5MP (2592*1994)@25fps
- H.264/H.265
- Face detection
- Built-In Microphone
- IR Range 30m
- Fixed Lens 3.6/6mm
- DWDR, 3D DNR, BLC, ROI
- PoE, metal case, IP67



ES-855P21/22C-S7/-MI

- 1/2.8" CMOS
- 5MP (2592*1994)@25fps
- H.264/H.265
- Face detection
- Built-in Microphone
- IR Range 30m
- Fixed Lens 2.8/3.6mm
- DWDR, 3D DNR, BLC, ROI
- PoE, metal case, IP67



BL-855P48S-S7

- 1/2.8" CMOS
- 5MP (2592*1994)@25fps
- H.264/H.265
- Face detection
- IR Range 80m
- Motorized 3.6-10.8mm lens
- DWDR, 3D DNR, BLC, ROI
- 1CH Audio Input
- PoE, metal case, IP67



DL-855P28B-S7

- 1/2.8" CMOS
- 5MP (2592*1994)@25fps
- H.264/H.265
- Face detection
- IR Range 30m
- Motorized 3.6-10.8mm lens
- DWDR, 3D DNR, BLC, ROI
- 1CH Audio Input
- Audio/Alarm/RS485/SD card slot
- PoE, metal case, IP67,IK10



BL-855P48A-S7

- 1/2.8" CMOS
- 5MP (2592*1994)@25fps
- H.264/H.265
- Face detection
- IR Range 80m
- Motorized 3.6-10.8mm lens
- DWDR, 3D DNR, BLC, ROI
- Audio/Alarm/RS485/SD card slot
- PoE, metal case, IP67



BS-858M22/23C-S8

- 1/2.8" Sony CMOS
- 8MP (3840*2160)@20fps
- H.264/H.265/H.265+
- Face Detection
- IR Range 30m
- Fixed Lens 3.6/6mm
- DWDR, 3D DNR, BLC, ROI
- PoE, metal case, IP67



DL-858M22B-S8

- 1/2.8" Sony CMOS
- 8MP (3840*2160)@20fps
- H.264/H.265/H.265+
- Face Detection
- IR Range 30m
- Fixed Lens 3.6mm
- DWDR, 3D DNR, BLC, ROI
- 1CH Audio Input
- PoE, metal case, IP67,IK10



BL-858M48S-S8

- 1/1.8" Sony CMOS
- 8MP (3840*2160)@20fps
- H.264/H.265/H.265+
- Face Detection
- IR Range 80m
- Motorized 3.6-11mm
- DWDR, 3D DNR, BLC, ROI
- 1CH Audio Input
- PoE, metal case, IP67,IK10



DL-858M28B-S8

- 1/2.8" Sony CMOS
- 8MP (3840*2160)@20fps
- H.264/H.265/H.265+
- Face Detection
- IR Range 30m
- Motorized 3.6-11mm
- DWDR, 3D DNR, BLC, ROI
- 1CH Audio Input
- Audio/Alarm/RS485/SD card slot
- PoE, metal case, IP67,IK10



BL-858M48A-S8

- 1/2.8" Sony CMOS
- 8MP (3840*2160)@20fps
- H.264/H.265/H.265+
- Face Detection
- IR Range 80m
- Motorized 3.6-11mm
- DWDR, 3D DNR, BLC, ROI
- Audio/Alarm/RS485/SD card slot
- PoE, metal case, IP67



BioUltra Series IP Camera

BL-852Q38A

- 1/2.8" Sony STARVIS CMOS
- 2MP (1920*1080)@25fps
- H.264/H.265/H.265+
- Facial Recognition,3000 Face Library
- IR Range 50m
- 3X zoom motorized lens
- 120dB TWDR, 3D DNR, BLC, ROI
- Audio/Alarm/RS485/SD card slot
- PoE,metal case, IP67



DL-852Q28B

- 1/2.8" Sony STARVIS CMOS
- 2MP (1920*1080)@25fps
- H.264/H.265/H.265+
- Facial Recognition,3000 Face Library
- IR Range 30m
- 3X zoom motorized lens
- 120dB TWDR, 3D DNR, BLC, ROI
- PoE,metal case, IP67



BL-852Q38A-LP

- 1/2.8" Sony STARVIS CMOS
- 2MP (1920*1080)@25fps
- H.264/H.265/H.265+
- License Plate Recognition
- IR Range 50m
- 3X zoom motorized lens
- 120dB TWDR, 3D DNR, BLC, ROI
- Audio/Alarm/RS485/SD card slot
- PoE, metal case, IP67



DL-852Q28B-LP

- 1/2.8" Sony STARVIS CMOS
- 2MP (1920*1080)@25fps
- H.264/H.265/H.265+
- License Plate Recognition
- IR Range 30m
- 3X zoom motorized lens
- 120dB TWDR, 3D DNR, BLC, ROI
- Audio/Alarm/RS485/SD card slot
- PoE, metal case, IP67



DL-858V17C-FS

- 1/1.7" Sony CMOS
- 8MP (3840*2160)@(1-25/30fps)
- H.264/H.265
- IR Range 10-20m
- Starlight/120dB TWDR
- 360 degree panoramic
- Audio/Alarm/RS485/SD card slot/PoE
- Metal case, IP66



Full Color IP Camera

ES-852O11/12C-S5-C

- 1/2.9" CMOS
- 24 hours 2MP full color
- 2MP (1920*1080)@25fps
- H.264/H.265
- Face Detection
- White light range 10-20m
- Fixed Lens 2.8/3.6mm
- DWDR, 3D DNR, BLC, ROI
- PoE, metal case, IP67



BS-852O11/12C-S5-C

- 1/2.9" CMOS
- 24 hours 2MP full color
- 2MP (1920*1080)@25fps
- H.264/H.265
- Face Detection
- White light range 10-20m
- Fixed Lens 2.8/3.6mm
- DWDR, 3D DNR, BLC, ROI
- PoE, metal case, IP67



ES-855P11/12C-S7-C

- 1/2.8" CMOS
- 24 hours 5MP full color
- 5MP (2592*1944)@25fps
- H.264/H.265
- Face Detection
- White light range 10-20m
- Fixed Lens 2.8/3.6mm
- DWDR, 3D DNR, BLC, ROI
- PoE, metal case, IP67



BS-855P11/12C-S7-C

- 1/2.8" CMOS
- 24 hours 5MP full color
- 5MP (2592*1944)@25fps
- H.264/H.265
- Face Detection
- White light range 10-20m
- Fixed Lens 2.8/3.6mm
- DWDR, 3D DNR, BLC, ROI
- PoE, metal case, IP67



Human Detection IP PTZ

PS-852D18/30L

- 2MP 1/2.9" CMOS sensor
- 18/30X optical Zoom
- IR Range 150m
- Pan speed 180°/s & Tilt speed 100°/s
- DWDR, BLC, 2D&3D noise reduction
- Built-In Microphone & Speaker
- Human detection linkage with sound speaker and auto tracking
- PoE, IP66



PS-855C18/30L

- 5MP 1/2.9" CMOS sensor
- 18/30X optical Zoom
- IR Range 120m
- Pan speed 180°/s & Tilt speed 100°/s
- DWDR, BLC, 2D&3D noise reduction
- Built-In Microphone & Speaker
- Human detection linkage with sound speaker and auto tracking
- PoE, IP66



PL-852D18/30M

- 2MP 1/2.9" CMOS sensor
- 18/30X optical Zoom
- IR Range 150m
- Pan speed 180°/s & Tilt speed 100°/s
- DWDR, BLC, 2D&3D noise reduction
- Built-In Microphone & Speaker
- Human detection linkage with sound speaker, strobe lights and auto tracking
- PoE, IP66



PL-855C18/30M

- 5MP 1/2.9" CMOS sensor
- 18/30X optical Zoom
- IR Range 120m
- Pan speed 180°/s & Tilt speed 100°/s
- DWDR, BLC, 2D&3D noise reduction
- Built-In Microphone & Speaker
- Human detection linkage with sound speaker, strobe lights and auto tracking
- PoE, IP66



KB200(IP Keyboard)

- ONVIF Profile S
- 5 Inch colorful LED display
- PnP, DHCP, TCP/IP protocol
- HDMI output



H.265+ Non-POE NVR Series

Z8504NER



- H.265+
- Max resolution: 4CH*5MP@25/30fps
- HDMI 1080P Output
- Mini 1U Case, SATA x 1

Z8508NER



- H.265+
- Max resolution: 8CH*5MP@25/30fps
- HDMI 1080P Output
- Mini 1U Case, SATA x 1

Z8516NER



- H.265+
- Max resolution: 16CH*5MP@25/30fps
- HDMI 1080P Output
- Mini 1U Case, SATA x 1

Z8516NFR



- H.265+
- Max resolution: 16CH*8MP@25/30fps
- HDMI 4K Output
- 1U Case, SATA x 2

Z8532NFR



- H.265+
- Max resolution: 32CH*8MP@25/30fps
- HDMI 4K Output
- 1U Case, SATA x 2

Z8536NMR



- H.265+
- Max resolution: 36CH*8MP@25/30fps
- HDMI 4K Output
- 1.5U Case, SATA x 4

Z8536NHR



- H.265+
- Max resolution: 36CH*8MP@25/30fps
- HDMI 4K Output
- 2U Case, SATA x 9

Z8564NHR



- H.265+
- Max resolution: 64CH*8MP@25/30fps
- HDMI 4K Output
- 2U Case, SATA x 9

Z85128NTR



- H.265+
- Max resolution: 128CH*8MP@25/30fps
- HDMI 4K Output
- 3U Case, SATA x 16

H.265+ POE NVR Series

Z8504NER-4P



- H.265+
- 4 channel IP Input, 4 PoE Port
- Max resolution: 4CH*5MP@25/30fps
- HDMI 1080P Output
- Mini 1U Case, SATA x 1

Z8508NER-8P



- H.265+
- 8 channel IP Input, 8 PoE Port
- Max resolution: 8CH*5MP@25/30fps
- HDMI 1080P Output
- Mini 1U Case, SATA x 1

Z8516NFR-16P



- H.265+
- 16 channel IP Input, 16 PoE Port
- Max resolution: 16CH*8MP@25/30fps
- HDMI 4K Output
- 1U Case, SATA x 2

Z8532NFR-16P



- H.265+
- 32 channel IP Input, 16 PoE Port
- Max resolution: 32CH*8MP@25/30fps
- HDMI 4K Output
- 1U Case, SATA x 2

BioFace Lite Face Recognition NVR Series

Z8608NF-8F



- H.265+
- 8MP@25/30fps
- 8ch Face recognition decoding
- 50,000pcs Face Templates
- 25 faces-sec Match Speed
- 1U Case, SATA x 2

Z8636NF-16F



- H.265+
- 8MP@25/30fps
- 16ch Face recognition + 20ch Regular decoding
- 100,000pcs Face Templates
- 50 faces-sec Match Speed
- 1U Case, SATA x 2

Z8536NMR-4F



- H.265+
- 8MP@25/30fps
- 4ch Face recognition + 32ch Regular decoding
- 5,000pcs Face Templates
- 3-4 faces-sec Match Speed
- 1.5U Case, SATA x 4

IOT and USB product series

NG-V400



- 4ch Wi-Fi NVR, 1SATA
- 4* 2MP Wi-Fi IP camera, H.265
- 3.6mm lens
- IR distance 20m
- Wi-Fi connection, plug-n-play
- Human body detection
- Suitable for the outdoors (IP66 for IP cameras)

NG-V800



- 8ch Wi-Fi NVR, 1SATA
- 8* 2MP Wi-Fi IP camera, H.265
- 3.6mm lens
- IR distance 20m
- Wi-Fi connection, plug-n-play
- Human body detection
- Suitable for the outdoors (IP66 for IP cameras)

UV100



(Special Model)

- USB Camera
- 1080P (1920x1080@30fps) HD camera
- USB2.0 connectivity, for a fast, easy connection
- General UVC protocol, drive-free Installation
- Built-In MIC, support Audio & Video recording
- Support 360° rotation, tripod, plastic casing

NG-C4100

- 1/2.7" CMOS Sensor
- 3MP (2304*1296)@16fps
- H.265 / H.264
- Motion/Human Detection
- 3.6 mm lens
- IR Light Distance 5-20m
White Light Distance 5-20m
- 340° horizontal and 90° vertical
- Built-In Mic & Speaker
- Cloud Storage/TF Card Slot/Echo show & Google assistant optional



NG-C2200

- 1/3" CMOS Sensor
- 2MP (1920*1080)@20fps
- H.264
- Motion/Human Detection
- 4 mm lens
- IR Distance 10m
- 345° horizontal and 85° vertical
- Built-In Mic & Speaker
- Cloud Storage/TF Card Slot/Echo show & Google assistant optional



1080P HD Analog Cameras

ES-32B11J



- 1080P 1/2.9" CMOS
- IR Range: 20m
- AHD/TVI/CVI/CVBS Video Output
- DWDR
- Fixed Lens 2.8mm

BS-32B11A



- 1080P 1/2.9" CMOS
- IR Range: 20m
- AHD/TVI/CVI/CVBS Video Output
- DWDR
- Fixed Lens 2.8mm

ES-32B11C



- 1080P 1/2.9" CMOS
- IR Range: 20m
- AHD/TVI/CVI/CVBS Video Output
- DWDR
- Fixed Lens 2.8mm

BS-32B21C



- 1080P 1/2.9" CMOS
- IR Range: 30m
- AHD/TVI/CVI/CVBS Video Output
- DWDR
- Fixed Lens 2.8mm

ES-32G11/12C-MI



- 1080P 1/2.9" CMOS
- IR Range: 20m
- DWDR
- Fixed Lens 2.8/3.6mm
- Built-in audio
- AHD/TVI/CVI/CVBS Video Output
- IP67

BS-32G22/23C-MI



- 1080P 1/2.9" CMOS
- IR Range: 30m
- DWDR
- Fixed Lens 3.6/6mm
- Built-in audio
- AHD/TVI/CVI/CVBS Video Output
- IP67

ES-32D11/12C



- 1080P 1/2.9" CMOS
- IR Range: 20m
- DWDR
- Fixed Lens 2.8/3.6mm
- AHD/TVI/CVI/CVBS Video Output

BS-32D22/23C



- 1080P 1/2.9" CMOS
- IR Range: 30m
- DWDR
- Fixed Lens 3.6/6mm
- AHD/TVI/CVI/CVBS Video Output

BL-32G33S-MI

- 1080P 1/2.9" CMOS
- IR Range: 50m
- DWDR
- Fixed Lens 6mm
- Built-in audio
- AHD/TVI/CVI/CVBS Video Output
- IP67



BL-32G44S-MI

- 1080P 1/2.9" CMOS
- IR Range: 80m
- DWDR
- Fixed Lens 8mm
- Built-in audio
- AHD/TVI/CVI/CVBS Video Output
- IP67



BL-32G38S-MI

- 1080P 1/2.9" CMOS
- IR Range: 50m
- DWDR
- Motorized 3.35-10.05 mm
- Built-in audio
- AHD/TVI/CVI/CVBS Video Output
- IP67



DL-32G28B-MI

- 1080P 1/2.9" CMOS
- IR Range: 30m
- DWDR
- Motorized 3.35-10.05 mm
- Built-in audio
- AHD/TVI/CVI/CVBS Video Output
- IP67, IK10



5MP HD Analog Cameras

ES-35H11/12C-MI

- 5MP 1/2.5" CMOS
- IR Range: 20m
- DWDR
- Fixed Lens 2.8/3.6mm
- Built-in audio
- AHD/TVI/CVI/CVBS Video Output



BS-35H22/23C-MI

- 5MP 1/2.5" CMOS
- IR Range: 30m
- DWDR
- Fixed Lens 3.6/6mm
- Built-in audio
- AHD/TVI/CVI/CVBS Video Output



BL-35H33S-MI

- 5MP 1/2.5" CMOS
- IR Range: 50m
- DWDR
- Fixed Lens 6mm
- Built-in audio
- AHD/TVI/CVI/CVBS Video Output
- IP67



BL-35H44S-MI

- 5MP 1/2.5" CMOS
- IR Range: 80m
- DWDR
- Fixed Lens 8mm
- Built-in audio
- AHD/TVI/CVI/CVBS Video Output
- IP67



BL-35I38S-MI

- 5MP 1/2.8" CMOS
- IR Range: 50m
- DWDR
- Motorized 3.35-10.05 mm
- Built-in audio
- AHD/TVI/CVI/CVBS Video Output
- IP67



DL-35I28B-MI

- 5MP 1/2.8" CMOS
- IR Range: 30m
- DWDR
- Motorized 3.35-10.05 mm
- Built-in audio
- AHD/TVI/CVI/CVBS Video Output
- IP67, IK10



2MP/5MP Full Color AHD Camera

ES-32E11/12C-C

- 2MP Full Color, 1/2.8" CMOS
- White light range: 10-20m
- DWDR
- Fixed Lens 2.8/3.6mm
- AHD/TVI/CVI/CVBS Video Output



BS-32E11/12C-C

- 2MP Full Color, 1/2.8" CMOS
- White light range: 10-20m
- DWDR
- Fixed Lens 2.8/3.6mm
- AHD/TVI/CVI/CVBS Video Output



ES-35J11/12C-C

- 5MP Full Color, 1/2.7" CMOS
- White light range: 10-20m
- DWDR
- Fixed Lens 2.8/3.6mm
- AHD/TVI/CVI/CVBS Video Output



BS-35J11/12C-C

- 5MP Full Color, 1/2.7" CMOS
- White light range: 10-20m
- DWDR
- Fixed Lens 2.8/3.6mm
- AHD/TVI/CVI/CVBS Video Output



1080P/5MP HD Analogue PTZ

PS-32A10B

- 2MP 1/2.9" CMOS
- 10X Optical Zoom
- Pan speed 0.1-300°/s & Tilt speed 0.1- 200°/s



PS-32C18J

- 2MP 1/2.9" CMOS
- 18X Optical Zoom
- IR Range: 120m
- Pan speed 0.1-200°/s & Tilt speed 0.1- 200°/s
- IP66



PS-35C18J

- 5MP 1/2.7" CMOS
- 18X Optical Zoom
- IR Range: 120m
- Pan speed 0.1-200°/s & Tilt speed 0.1- 200°/s
- IP66



PL-32C20D

- 2MP 1/2.9" CMOS
- 20X Optical Zoom
- IR Range: 120m
- Pan speed 0.1-200°/s & Tilt speed 0.1- 180°/s
- IP66



PL-32C33D

- 2MP 1/2.9" CMOS
- 33X Optical Zoom
- IR Range: 120m
- Pan speed 0.1-200°/s & Tilt speed 0.1- 180°/s
- IP66



PL-35C20D

- 5MP 1/2.7" CMOS
- 20X Optical Zoom
- IR Range: 120m
- Pan speed 0.1-200°/s & Tilt speed 0.1- 180°/s
- IP66



PL-35C33D

- 5MP 1/2.7" CMOS
- 33X Optical Zoom
- IR Range: 120m
- Pan speed 0.1-200°/s & Tilt speed 0.1- 180°/s
- IP66



KB100

- RS485 & RS422 Interfaces
- Support PELCO D/P Protocols
- Each keyboard can control 32 cameras
- 3D Joystick controller, support setting Preset,Cruise, P/T/Z etc.



All in one H.265 XVR

H.265 5MP Lite XVR Series

Z8404XEC-CL

- 4CH 5MP Lite@12fps
- AHD/TVI/CVI/CVBS Input
- Mini 1U Case, SATA x 1
- HDMI 1080P Output



Z8408XEC-CL

- 8CH 5MP Lite@12fps
- AHD/TVI/CVI/CVBS Input
- Mini 1U Case, SATA x 1
- HDMI 1080P Output



Z8404XE-CL

- 4CH 5MP Lite@12fps
- AHD/TVI/CVI/CVBS Input
- Mini 1U Case, SATA x 1
- HDMI 4K Output



Z8408XE-CL

- 8CH 5MP Lite@12fps
- AHD/TVI/CVI/CVBS Input
- Mini 1U Case, SATA x 1
- HDMI 4K Output



LED Monitor

ZD22-2K

- 21.5"1080p LED FHD Monitor
- Brightness: 450 cd/m2
- Contrast: 3000:1
- Response Time: 5ms
- Color: 16.7M
- Video Inputs: 1*HDMI, 1*VGA



ZD32-4K

- 32"4K LED UHD Monitor
- Brightness: 500 cd/m2
- Contrast: 3000:1
- Response Time: 5ms
- Color: 16.7M
- Video Inputs: 1*HDMI, 1*VGA*, 1*DVI, 1*BNC



ZD43-4K

- 43"4K LED UHD Monitor
- Brightness: 700 cd/m2
- Contrast: 3000:1
- Response Time: 5ms
- Color: 16.7M
- Video Inputs: 2*HDMI, 1*VGA*, 1*DVI, 2*BNC



ZD50-4K

- 50"4K LED UHD Monitor
- Brightness: 750 cd/m2
- Contrast: 3000:1
- Response Time: 5ms
- Color: 16.7M
- Video Inputs: 2*HDMI, 1*VGA*, 1*DVI, 2*BNC



Transmission

POE Switch

PE04-60



- 4*10/100Mbps RJ45 Ports(support POE)
- 2*10/100Mbps Uplink Ports
- Max PoE power output 30W for each port
- IEEE 802.3af, IEEE802.3at POE Standards

PE08-120



- 8*10/100Mbps RJ45 Ports(support POE)
- 2*10/100Mbps Uplink Ports
- Max PoE power output 30W for each port
- IEEE 802.3af, IEEE802.3at POE Standards

PE16-180



- 16*10/100Mbps RJ45 Ports(support POE)
- 2*10/100/1000M Uplink Gigabit Combo Ports
- Power supply: 250w totally, each POE port max 30w
- Long-distance PoE Transmits 250 meters

PE24-240



- 24*10/100Mbps RJ45 Ports(support POE)
- 2*10/100/1000M Uplink Gigabit Combo Ports
- Power supply: 400w totally, each POE port max 30w
- Long-distance PoE Transmits 250 meters

Lens

DV3.9x11SR4A-SA1L

- Fujinon C lens, 11-43mm, F1.5, 1/1.8"
- 8MP, Manual Zoom&Focus, Auto Iris



CS-D0550IR(6MP)

- CS lens, 5-50mm, F1.4, 1/2.7"
- 6MP, Manual Zoom&Focus, Auto Iris



YT3011-3MP

- CS lens, 3.6-11mm, F1.5, 1/1.8"
- 3MP, Manual Zoom&Focus, Auto Iris



Bracket for IP PTZ Cameras

ZJ006

- Corner mount
- 180mm*131mm*127.25(L*W*H), weight:2.3KG
- For Human detection PTZ



ZJ007

- Pole mount
- 180mm*138.8mm*41.5mm(L*W*H), weight:1KG
- For Human detection PTZ



PB06

- Pendant bracket
- length 200*89.5*110.5mm, top Ø46.7mm, weight:0.52KG
- For 6 inch IP PTZ



Bracket for Analogue PTZ Cameras

PB04

- Pendant bracket
- L: 135mm, D: 128mm, weight: 0.52Kg
- For analog PTZ cases: PS-J



PB05

- Pendant bracket
- L: 254mm, D: 121mm, weight: 0.76Kg
- For analog PTZ cases: PL-D



MT05

- Pole mount
- L*W: 195*125(mm), weight: 1.08Kg
- For analog PTZ cases: PL-D



MT06

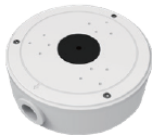
- Corner mount
- L*W: 240*143(mm), weight:1.7Kg
- For analog PTZ cases: PL-D



Bracket and Junction box for normal cameras

GB01

- Waterproof Junction box
- 135mm*45.5mm(Ø*H), weight 0.45kgs
- For cases: BS-K, BS-B, ES-H, BL-L, EL-I, BS-C, ES-C, BL-S



MT03

- Corner mount
- L*W*H: 150mm*150mm*128mm(L*W*H), weight:1KG
- For casing: BS -C, ES-C, BL-S, BL-L, EL-I, BS-B, ES-B, GB01



MT04

- Pole mount
- L*W*H: 150mm*150mm*50mm(L*W*H), weight:0.8KG
- For casing: BS -C, ES-C, BL-S, BL-L, EL-I, BS-B, ES-B, GB01



AntarVis 2.0 (VMS)



- Up to 320 channels input
- User-friendly modular design GUI
- Support 64 channels preview synchronously each layout
- Support up to 1/4/9 channels playback synchronously
- Support 3D positioning and Fisheye camera
- Support smart search and e-Map
- Support decoder/TV wall and group management



AntarView Pro

- Intuitive operation, friendly GUI
- Support 1/4/9/16 channels preview synchronously
- Support QR code scanning to add devices via P2P
- Support local and remote playback for images and video
- Support alarm push function
- Support Android and IOS version
- Support Face Registration



Record



Playback



Face



PTZ



QR Code



Two-way audio

ZKBioAccess IVS



- Supports 64 channels video preview and up to 4 channel playback at the same time
- Support query personnel by image content, schedule record, event record etc
- Supports facial recognition NVR, black and white list management, real-time check the capture comparison results
- Supports decoder polling as planned, decoder playback, TV wall splicing function
- Supports multiple alarm types, such as motion detection, line crossing, intrusion, target counting, object left/lost, video tampering



BS Architecture



T & A



CCTV



Unconscious



APP



Anti passback

