



YLI ELECTRONIC

Electric Bolt with Cylinder

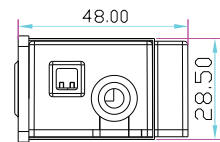
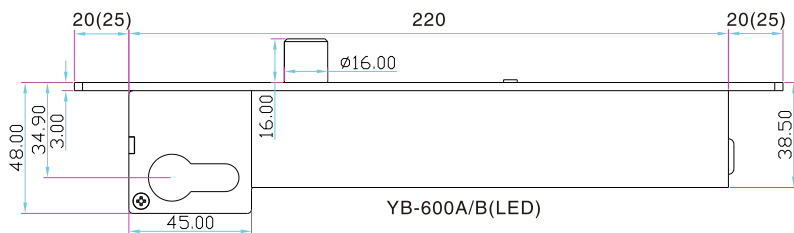
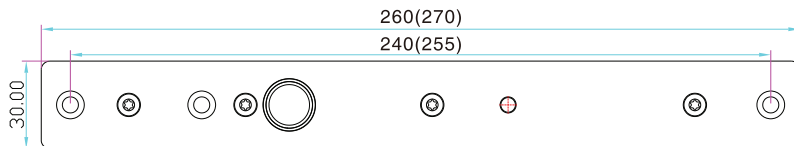
Model: YB-600/630A/B(LED)



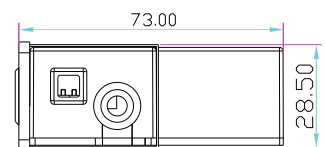
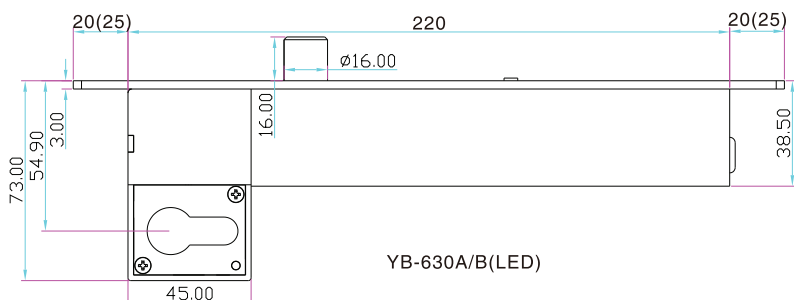
Parameters

Lock Body	260/270Lx30Wx48H(mm)[YB-600A/B(LED)] 260/270Lx30Wx73H(mm)[YB-630A/B(LED)]
Magnetic Plate	100Lx25Wx2.5H(mm)
Bolt	16(prolongation)*16(diameter)(mm)
Signal Output	Lock signal(NO/NC/COM)
Time Delay	0/3/6/9 sec
Voltage	12VDC
Current	Start 1200mA,Standby 200mA
Feature	Fail safe[YB-600&630A(LED)] Fail secure [YB-600&630B(LED)]
LED	Light on indicates locked, light off indicates unlocked
Detection Distance	Within 8mm
Suitable for	Wooden door,metal door,fireproof door,glass door
Material	304 stainless steel, wire draw finishing
Weight	1.6kg/1.8kg

Dimensions



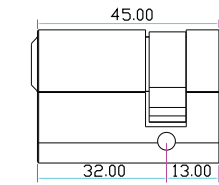
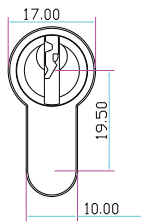
YB-600A/B(LED)



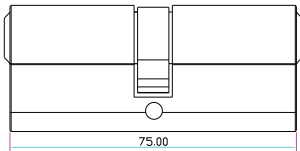
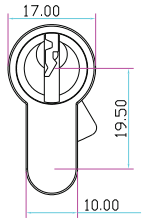
YB-630A/B(LED)

Optional Accessory

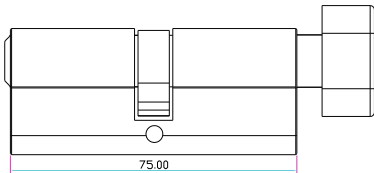
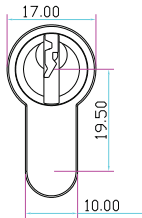
Single side cylinder or both side cylinder, other sizes are available too: 80/90/100/110/120mm.



Single side cylinde

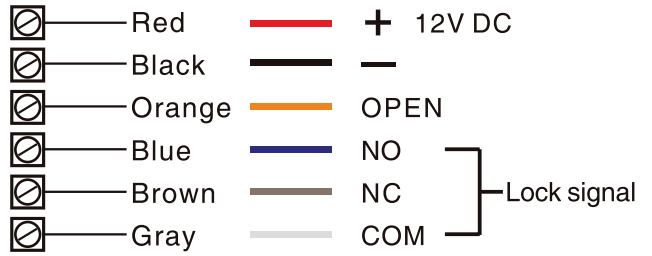


Double side cylinder



Single side cylinder with Thumb

Wiring Diagram



Time Delay

Adjust the delay time for locking auto matically 0/3/6/9 secs.



0.0 SEC



6.0 SEC

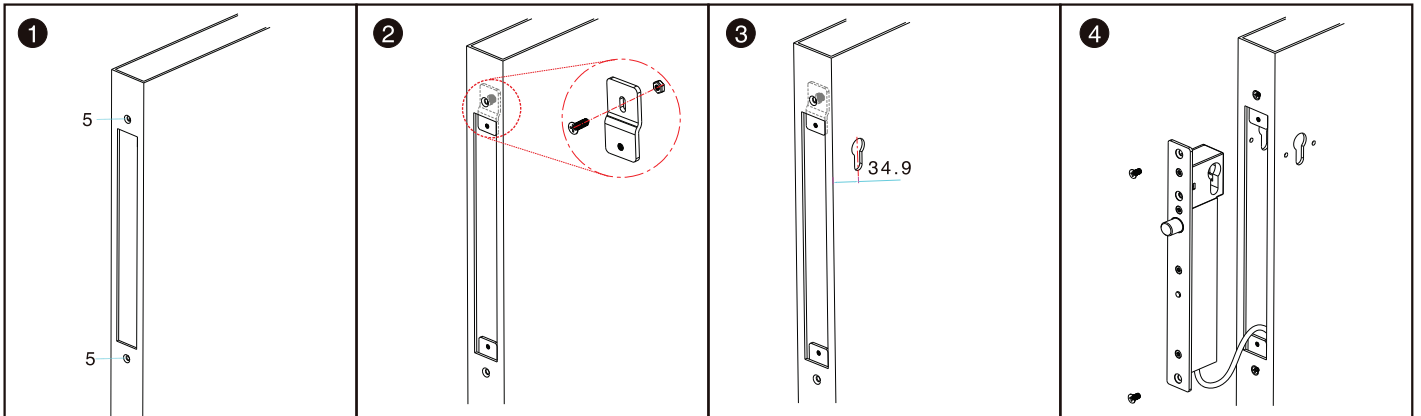


3.0 SEC



9.0 SEC

Installation steps

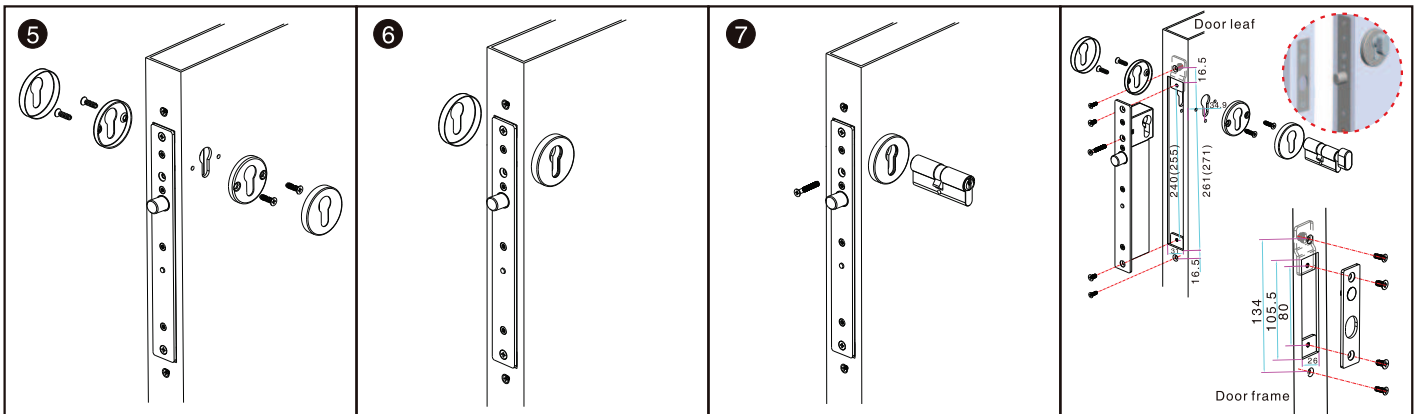


1 Drill and cut our as template indicates

2 Fasten fixing lugs

3 Cut door leaf out for cylinder installation

4 Connect power cable to electric bolt and test it



5 Mount electric bolt and cylinder

6 Fix cylinder's cover

7 Use long screw to tighten the cylinder

Installation Schematic